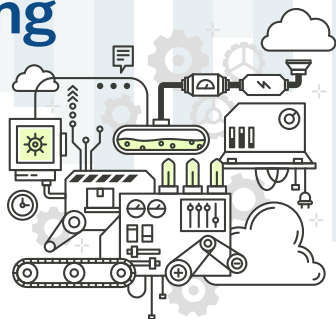


Department of Mechanical Design Engineering



Open LAB Tour 01

- Target: Future Graduate Students
- Date: End of April-Early May, End of Sep-Early Oct (During the Graduate School Fair)

Admissions 02

- Evaluated through the application packet and interview for admissions.
 - Apply online via Uwayapply or submit the application packet to the Graduate School Team.
 - Application requirements are posted on the Hanyang University Website and department page.
- Admission Process
 - First Term: October, December
 - Second Term: May, June
- Announcements (Posted on the Graduate School Website, www.grad.hanyang.ac.kr)
 - First Term Announcements: November, February
 - Second Term Announcements: June, August

Orientation 03

- The College of Engineering Orientation: End of Feb - Beginning of March
 - International Student Orientation: End of Feb - Beginning of March
 - Local Student Orientation: Beginning of March
- Additional orientation may be scheduled by each lab.

Prerequisites and Transfer Credits 04

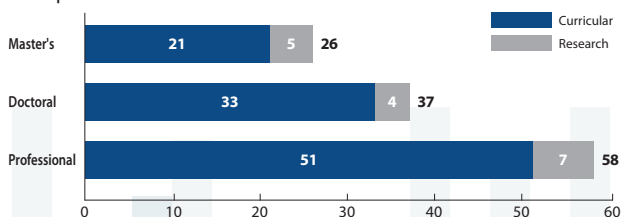
- Prerequisites
 - If freshmen from other majors need to take some undergraduate courses as prerequisites, they shall discuss this with their academic advisors and head professor of the department to choose the required prerequisite courses.
 - Prerequisites are not included as credits for graduation.
- Transfer credits
 - Doctoral program: For students who have acquired excess credits from a master's program in Hanyang University Graduate Schools, up to 6 credits may be transferred.
 - Same degree program: For students who were enrolled in the same degree program at an other graduate school, some credits may transfer provided a B grade or higher was earned in the course(s).

Curriculum 05

● Major

| Major | Overview |
|-------------------------------|--|
| Mechanical Design Engineering | <p>Students pursue in-depth learning and discussions in regards to the basic theories in Mechanics and the latest applied engineering methods to design, construct, and operate various mechanical systems that are becoming more precise and functional safely and economically.</p> <p>Areas of study</p> <ul style="list-style-type: none"> - Applied designs and technology based on Mechanics (thermal, fluids, materials, dynamics) - Interpretation and design of mechanical structures - Design engineering - Intelligent design systems - Auto-control and automated systems - Precise operation technology - Mechanical instrumentation and evaluation - Precise processing and production automation |

● Required Credits



● Required Courses

- General courses in Natural Science: Required R&D courses in Natural Science
- Required research courses
 - Master's: Master's Thesis Study (COE8026)
 - Doctoral and Professional: Doctoral Thesis Study 1 (COE8027), Doctoral Thesis Study 2 (COE8028)

- Elective research courses (Doctoral and Professional): WRITING RESEARCH PAPERS (DME9020) or WRITING RESEARCH PAPERS 2 (DME9021)
- Required research courses may be taken in the second term.
- Program shall be extended if required courses are not taken during regular semesters.
- Refer to the Graduate School and department regulations for other required courses.

Academic Advisors 06

- Choose your desired academic advisor before enrollment to discuss academic plans beforehand.
- If you have not chosen an academic advisor, you may discuss having an academic advisor appointed with the head of the department.
- Submit the application for academic advisor by the end of the first term for confirming their appointment.
- You may discuss switching to another academic advisor for the thesis with your current academic advisor.

Fusion Majors 07

- Fusion majors in materials, parts, and equipment.
- Degrees in fusion majors
 - Earn required credits from courses within various departments.
 - Students must satisfy both the graduation requirements of the Department of Mechanical Design Engineering and the regulations of the chosen fusion major.
 - The degree for a fusion major indicates the title of the fusion major along with the title in the Department of Mechanical Design Engineering.
- For details on the qualifications for fusion major, refer to the internal regulations.

Language Proficiency Tests 08

- Time: First-second weeks of March or September (after the start of school)
- Courses: English or Korean (if English is the native language)
- May be substituted with official test scores.
 - Official test scores: English (TOEIC, TOEFL, TEPS, G-TELP, IELTS, GRE, GMAT) / Korean (TOPIK)

General Examination

09

- Required credits X → Extension to take more credits.
 - Pay the tuition to take the remaining credits (half the amount for up to 3 credits and the full amount for 4 credits or more).
- Qualification
 - Master's: 18 credits or more, all prerequisites completed.
 - Doctoral: All credits for graduation have been earned or will be earned by the end of the current semester, all prerequisites completed.
 - Professional: Enrolled for 6 terms or longer and all credits for graduation have been earned or will be earned by the end of the current semester, all prerequisites completed.
- Examination: During April or October
- Courses tested: 3 major courses in graduate program, 4 major courses in doctoral or professional program

Qualification for Thesis

10

- Master's Program
 - Refer to the Academic Rules of Graduate Programs and decrees for qualification for master's thesis.
- Doctoral and Professional Programs
 - Refer to the Degree Conferment Requirements of Academic Rules of Graduate Programs and decrees.
 - At least **200%** publications in journals related to the field of major (n: number of authors)
 - If major author and correspondence author: $[2/(n+1)]*100\%$
 - If a participant: $[1/(n+1)]*100\%$
 - Doubled for SCI-grade theses.
 - At least one thesis published in or approved for publication in an SCI-grade international journal as the major author.
 - If approved by an SCI(E)-grade international journal for one thesis as the major author or more than one thesis as a co-author (participating author), it is acknowledged that the qualification for thesis is satisfied regardless of the above requirements.
 - If published in a domestic journal, choose a journal approved by the Korea Research Foundation.
 - The published version shall be submitted, but if unavailable, submit a certificate of publication or an equivalent document proving publication.
 - Publication performance shall be calculated by rounding up to the

nearest tenth.

- When publishing a thesis, the organization name shall be Hanyang University.

- For further details, refer to the regulations in the Graduate School Handbook.

Thesis Writing

11

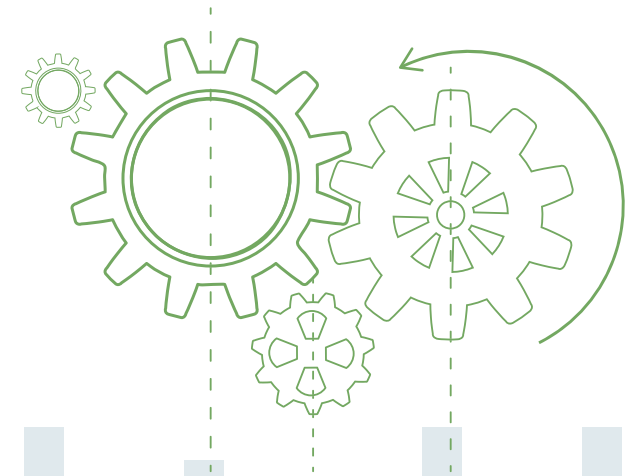
- Application for Thesis
 - Enter the Proposal (3rd term for Master's/Doctoral Programs, 5th term for Professional Program) → Apply for Thesis → Thesis Evaluation → Submit Thesis (Digital, Hard Copy) → Conferment of Degree
- Qualification for Thesis
 - Pass the language proficiency test and have the proposal approved:
 - Master's: Completed 4 terms and earned or will earn the required credits.
 - Doctoral: Completed 4 terms for doctoral program and 6 terms for professional program and earned or will earn the required credits.
- Evaluation Committee
 - Master's: Three members including academic advisor and one outside member.
 - Doctoral: Five members including academic advisor and up to two outside members.

Conferment of Degree

12

- Must satisfy all conditions for the degree.
- Degrees conferred in February or August.

Department of Mechanical Design Engineering



HANYANG UNIVERSITY

222, Wangsimni-ro, Seongdong-gu, Seoul, 04763 Republic of Korea

Tel. 02-2220-0840 Fax. 02-2281-4554

E-mail. hyu45@hanyang.ac.kr

homepage. <http://social.hanyang.ac.kr>

HANYANG UNIVERSITY